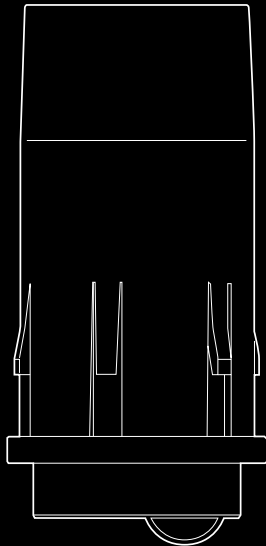




90 GRAD
MARIO RIEGGER

OPERATING INSTRUCTIONS

CASTER SYSTEM



CASTER SYSTEM

112110, 112115, 112120,
112125, 112135, 112140,
112145, 112150, 112155

VERSION 1
JANUARY 2021
© 2021

COMPANY INFORMATION

90 GRAD GmbH

Managing Director: Mario Riegger

Cell phone +49 173 8936494

E-mail mr@90grad.net

Website www.90grad.net

Address Tobelweg 26 A, 88090 Immenstaad am Bodensee, Germany

CASTER SYSTEM

The caster system from 90 GRAD GmbH has retractable swivel casters in the feet, giving you a simple, convenient way to move furniture, work tables, and machine tables.

The feet can be installed in hollow sections such as table legs, and in base plates on furniture.

An anti-slip rubber coating on the bottom of the feet ensures the furniture is kept securely in place.

NOTE

Observe the maximum pressure load for the caster system.

Please see the technical data: "Load capacity".

TECHNICAL DATA

CASTER SYSTEM

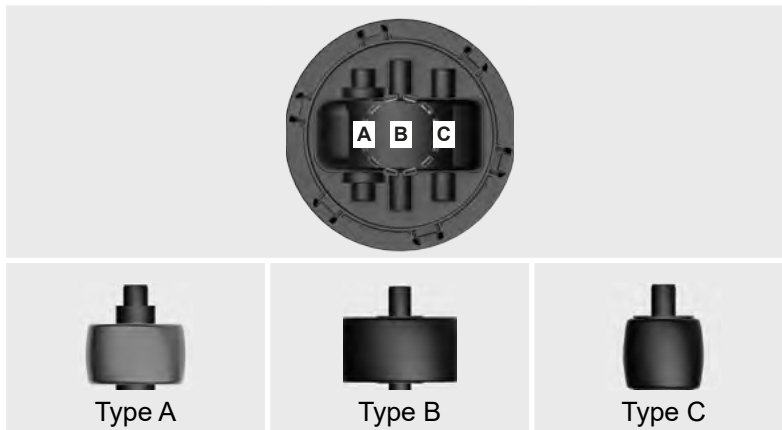


| | |
|--|---|
| Shaft diameter (a) | 46 mm (max. 47.5 mm) |
| Shaft length (b) | 84 mm |
| Support ring height (c) | 5 mm |
| Support ring diameter (d) | 50 mm |
| Adjustment range | 16 mm |
| Increments | 1.5 mm |
| Weight without caster and axle | 94 g |
| Load capacity | 50 kg |
| Plate thickness (e) (if installed in base plates) | 6 mm |
| Material | Glass fiber reinforced plastic |
| Color | Black (standard) Choice of colors on request |
| Caster | Swivels 360° |

TECHNICAL DATA

CASTER SYSTEM

| Article number | Caster | | | | | |
|----------------|----------|-------|---------|-------|-------------|--------------------------------|
| | Diameter | Width | Surface | Color | Axle length | Axle position |
| 112110 | 15 mm | 13 mm | Hard | White | 24 - 28 mm | Type C 9.2 mm off-center |
| 112115 | 15 mm | 13 mm | Soft | Gray | 24 - 28 mm | |
| 112120 | 16 mm | 15 mm | Hard | Black | 24 - 28 mm | |
| 112125 | 16 mm | 15 mm | Soft | Gray | 24 - 28 mm | |
| 112135 | 20 mm | 12 mm | Soft | Gray | 26 - 28 mm | Type A 8 mm off-center |
| 112140 | 25 mm | 15 mm | Hard | Black | 26 - 32 mm | Type B center |
| 112145 | 25 mm | 15 mm | Soft | Gray | 26 - 32 mm | |
| 112150 | 27 mm | 13 mm | Hard | White | 26 - 32 mm | |
| 112155 | 27 mm | 13 mm | Soft | Gray | 26 - 32 mm | |



INSTALLATION PROCESS FOR HOLLOW SECTIONS

The installation process is shown using the example of a table leg.

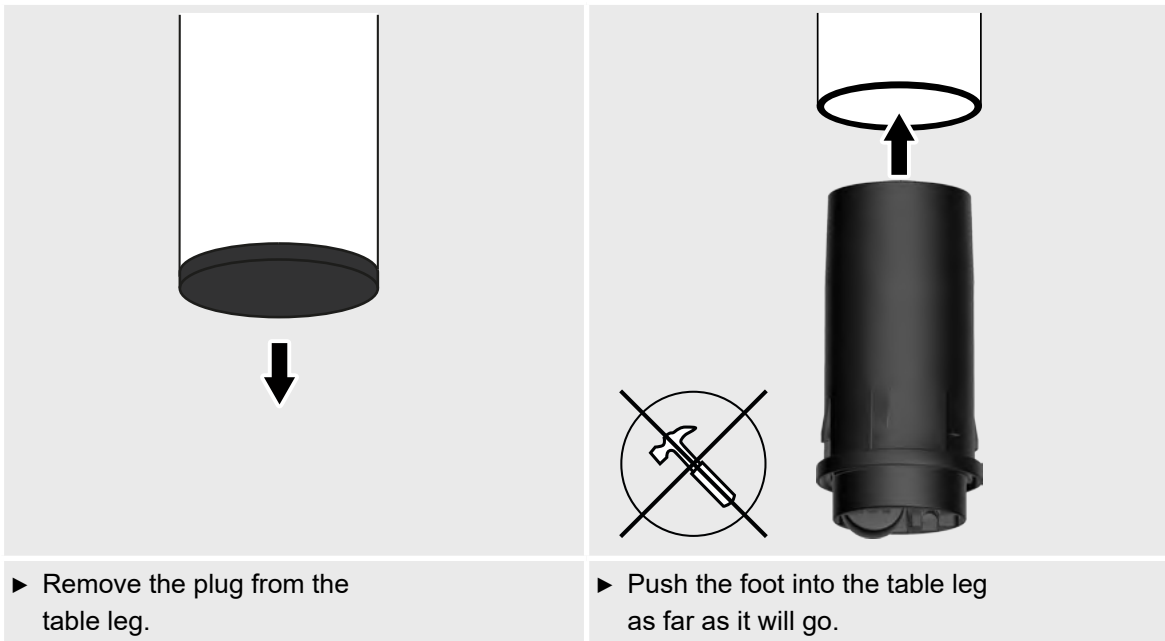
CAUTION



Risk of crushing

There is a risk of crushing fingers and hands when installing the feet.

- Ensure that the table is held securely when it is raised.



INSTALLATION PROCESS FOR BASE PLATES

CAUTION



Risk of crushing

There is a risk of crushing fingers and hands when installing the feet.

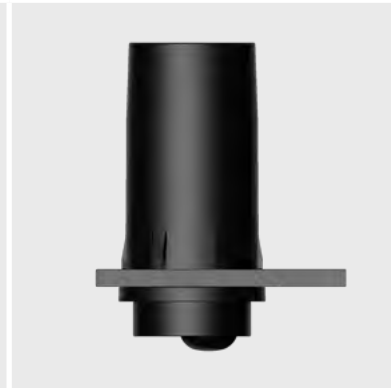
- Ensure that the item of furniture is held securely when it is raised.



- ▶ Drill a hole with a diameter of 46.5 mm into the base plate.



- ▶ Push the foot into the base plate as far as it will go.



NOTE

The feet are guaranteed to be held securely in the base plate if the base plate is max. 6 mm thick. The spring hooks on the feet prevent the feet falling out of the base plate when lifting the item of furniture. If the base plate is thicker, the feet will merely be pressed against the wall of the base plate.

REPLACING THE CASTERS



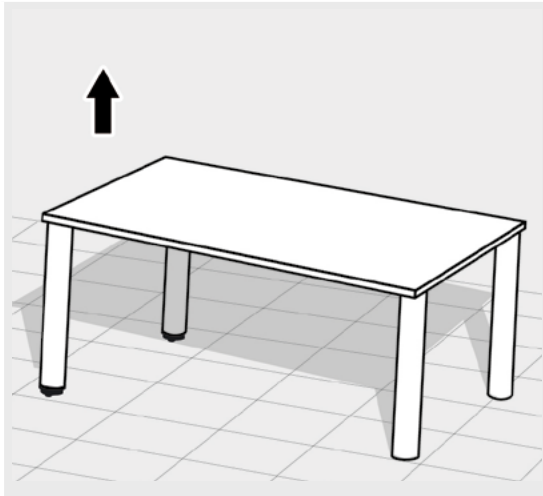
► Lever the caster plus its axle out of the slot.



► Insert the axle into the caster and press it into the relevant slot (please see the technical data: "Caster").

EXTENDING THE CASTERS

The process of extending the casters is shown using a table by way of example.



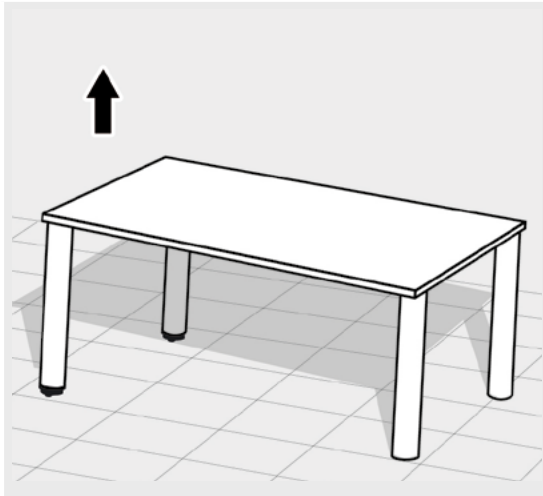
- ▶ Lift the table approx. 1 cm on one side and let it go.
- ▶ Lift the table approx. 1 cm on the opposite side and let it go.

NOTE

The casters have been extended. The table can now be moved.

RETRACTING THE CASTERS

The process of retracting the casters is shown using a table by way of example.



- ▶ Lift the table fully off the floor on one side and set it down again.
- ▶ Lift the table fully off the floor on the opposite side and set it down again.

NOTE

The casters have been retracted.



90 GRAD GmbH

CONTACT DETAILS

| | |
|------------|--|
| CELL PHONE | +49 173 8936494 |
| E-MAIL | MR@90GRAD.NET |
| WEBSITE | WWW.90GRAD.NET |
| ADDRESS | TOBELWEG 26 A, 88090 IMMENSTAAD AM BODENSEE, GERMANY |